



**QUEEN'S
UNIVERSITY
BELFAST**



[c h i t i n]
kite-tin

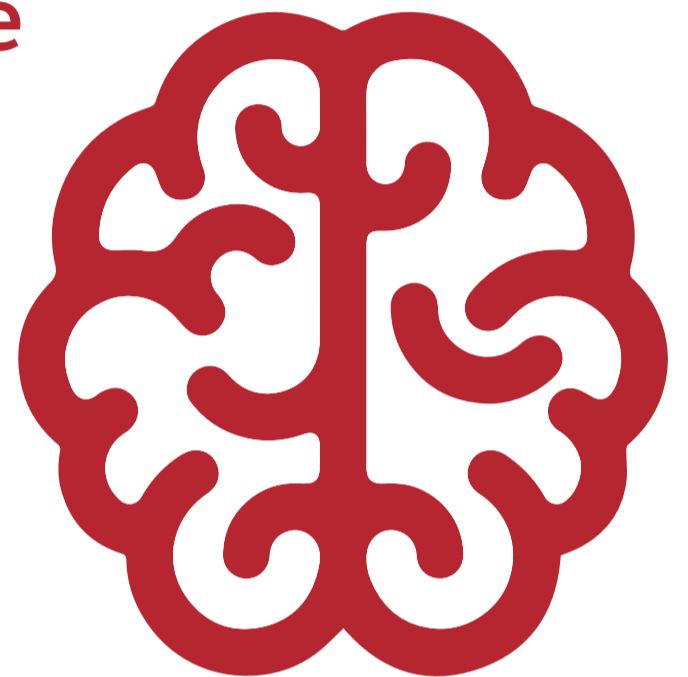
**Cross-border
Healthcare Intervention Trials
in Ireland Network**

BRAIN-Diabetes: Border Region Area lifestyle Intervention study for healthy Neurocognitive ageing in Diabetes

Diabetes Mellitus (DM) is associated with an almost three-fold increased risk of Dementia in later life.

BRAIN-Diabetes will study the feasibility and effects of a practical lifestyle intervention programme, developed in conjunction with people with DM living in the border areas of Ireland. This research could lead to development of a practical protocol that patients can comply with, which can reduce risk of cognitive decline and Dementia.

The CHITIN project has received €8.84m from the EU's INTERREG VA Programme, which is managed by the Special EU Programmes Body (SEUPB).



Contact:

**Professor Peter Passmore
Queen's University Belfast
Email: p.passmore@qub.ac.uk**

www.research.hscni.net/chitin

 [@CHITINProject](https://twitter.com/CHITINProject)

