

## Early, sustained and meaningful involvement



Develop PPI peer mentorship opportunities for both researchers and people who want to get involved in research



Proactively promote and signpost to existing PPI resources for both researchers and people who want to get involved in research



Identify the most consistent and accessible approach to promote PPI opportunities within Health and Social Care research in Northern Ireland

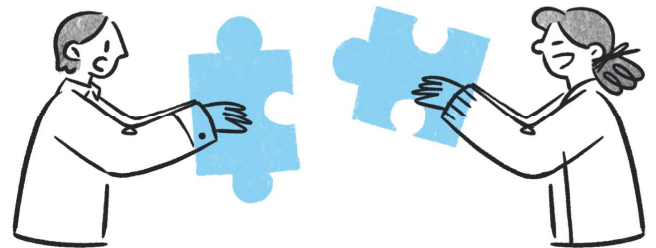


Promote the early involvement of people in Health and Social Care research through the availability of pre-application PPI support and funding for researchers

## Training, capacity building and support



Develop a co-produced 'train the trainers' training package for people who want to get involved in Health and Social Care research



Develop PPI training for researchers which focuses on developing practical skills for inclusive and sustained involvement, including communication, facilitation, and partnership working



Establish a regional PPI in research shared learning and coordination group to promote better alignment, collaboration, and shared learning between Health and Social Care, universities, funders, and the community and voluntary sector

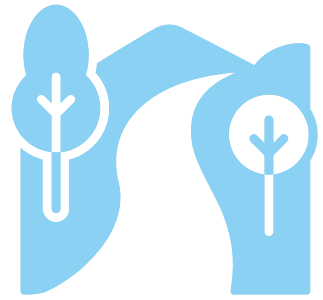


Embed PPI education and awareness within undergraduate and postgraduate programmes

# Relationships, trust and inclusive involvement



Develop an agreed pathway to engage with community and voluntary partners to promote PPI opportunities to people underserved by Health and Social Care research



Encourage senior researchers, institutional leaders, and decision-makers to actively support and champion meaningful PPI within the research culture and practice of their organisations

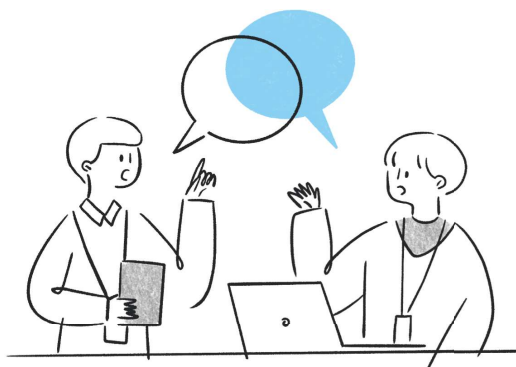


Promote the need to consider the impact of power dynamics, hierarchy, language, and psychological safety on involvement experiences

# Implementation, recognition and impact



Develop and share case studies examples of effective PPI practice and impacts across different types of Health and Social Care research in Northern Ireland



Deliver PPI learning or showcase events to celebrate and share good practice in Health and Social Care research across Northern Ireland and recognise the contributions of people who have been involved in research



Strengthen the monitoring and reporting requirements set by funders of Health and Social Care research to ensure PPI plans are being delivered on effectively

For more information see:  
<https://research.hscni.net/ppi-priorities>  
or scan the QR code

