

Priorities for Personal and Public Involvement (PPI) in Health and Social Care Research in Northern Ireland

We carried out the 'Involvement Matters' project to find out what was working well with Personal and Public Involvement (PPI) in Health and Social Care research in Northern Ireland, what could be better, and what actions could help strengthen PPI in the future.



What did we do?

Survey: 249 responses across Northern Ireland

Interim report based on survey results: 51 recommendations

51 recommendations condensed into 10 PPI focus areas

Workshop to discuss 10 PPI focus areas

Agreement reached on 14 priorities for action to strengthen PPI



What did people tell us?

Action was needed on four key areas:

- Early, sustained and meaningful involvement
- Training, capacity building and support
- Relationships, trust and inclusive involvement
- Implementation, recognition and impact

Based on the results of the regional survey and workshop, 14 'Priorities for Action' were developed.

Early, sustained and meaningful involvement



Develop PPI peer mentorship opportunities for both researchers and people who want to get involved in research



Proactively promote and signpost to existing PPI resources for both researchers and people who want to get involved in research



Identify the most consistent and accessible approach to promote PPI opportunities within Health and Social Care research in Northern Ireland



Promote the early involvement of people in Health and Social Care research through the availability of pre-application PPI support and funding for researchers

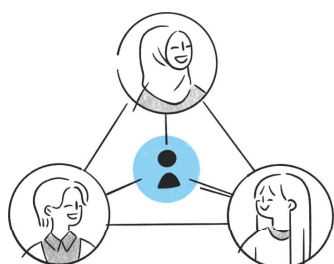
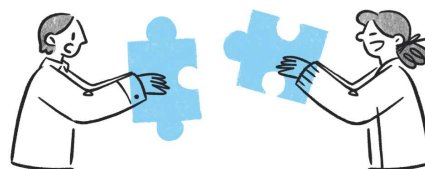
Training, capacity building and support



Develop PPI training for researchers which focuses on developing practical skills for inclusive and sustained involvement, including communication, facilitation, and partnership working



Develop a co-produced 'train the trainers' training package for people who want to get involved in Health and Social Care research



Embed PPI education and awareness within undergraduate and postgraduate programmes

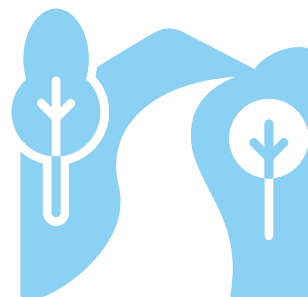


Establish a regional PPI in research shared learning and coordination group to promote better alignment, collaboration, and shared learning between Health and Social Care, universities, funders, and the community and voluntary sector

Relationships, trust and inclusive involvement



Develop an agreed pathway to engage with community and voluntary partners to promote PPI opportunities to people underserved by Health and Social Care research



Encourage senior researchers, institutional leaders, and decision-makers to actively support and champion meaningful PPI within the research culture and practice of their organisations

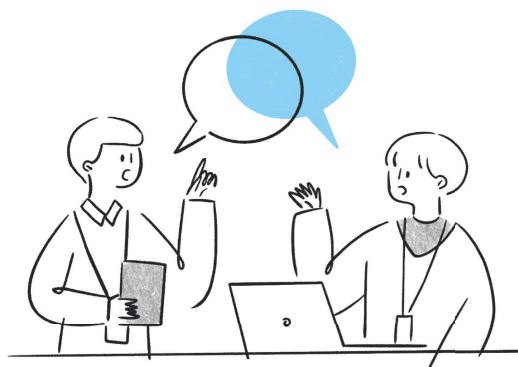


Promote the need to consider the impact of power dynamics, hierarchy, language, and psychological safety on involvement experiences

Implementation, recognition and impact



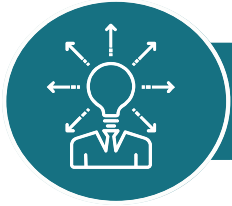
Develop and share case studies examples of effective PPI practice and impacts across different types of Health and Social Care research in Northern Ireland



Deliver PPI learning or showcase events to celebrate and share good practice in Health and Social Care research across Northern Ireland and recognise the contributions of people who have been involved in research



Strengthen the monitoring and reporting requirements set by funders of Health and Social Care research to ensure PPI plans are being delivered on effectively

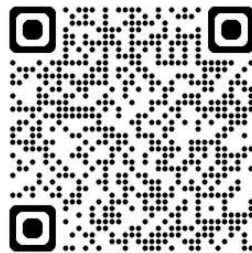


What happens next?

A regional PPI in research shared learning and co-ordination group will be established by Health and Social Care Research and Development Division to help guide the delivery of the priorities for action identified through the 'Involvement Matters' project.

Further information

To access the materials from the 'Involvement Matters' project, [please click here](#) or scan the QR code below:



To find out more about PPI in Health and Social Care research

[Please click here to view our animation.](#)

[View our PPI Resource Library for Researchers](#)

[View our PPI Resource Library for the Public](#) or [find out more about getting involved in Health and Social Care research.](#)