

Setting priorities in health services and systems research

Dr Janice Bailie

**Assistant Director
HSC R&D Division, PHA**



- TO-REACH is a Coordination and Support Action funded by Horizon 2020 Societal Challenge 1
- Coordinated by the Istituto Superiore di Sanità (National Institute of Health), Italy
- Public Health Agency – a partner as a national research funding organisation

CSA
(Coordination & Support Action)



Strategic Research Agenda
Joint Programme Structure



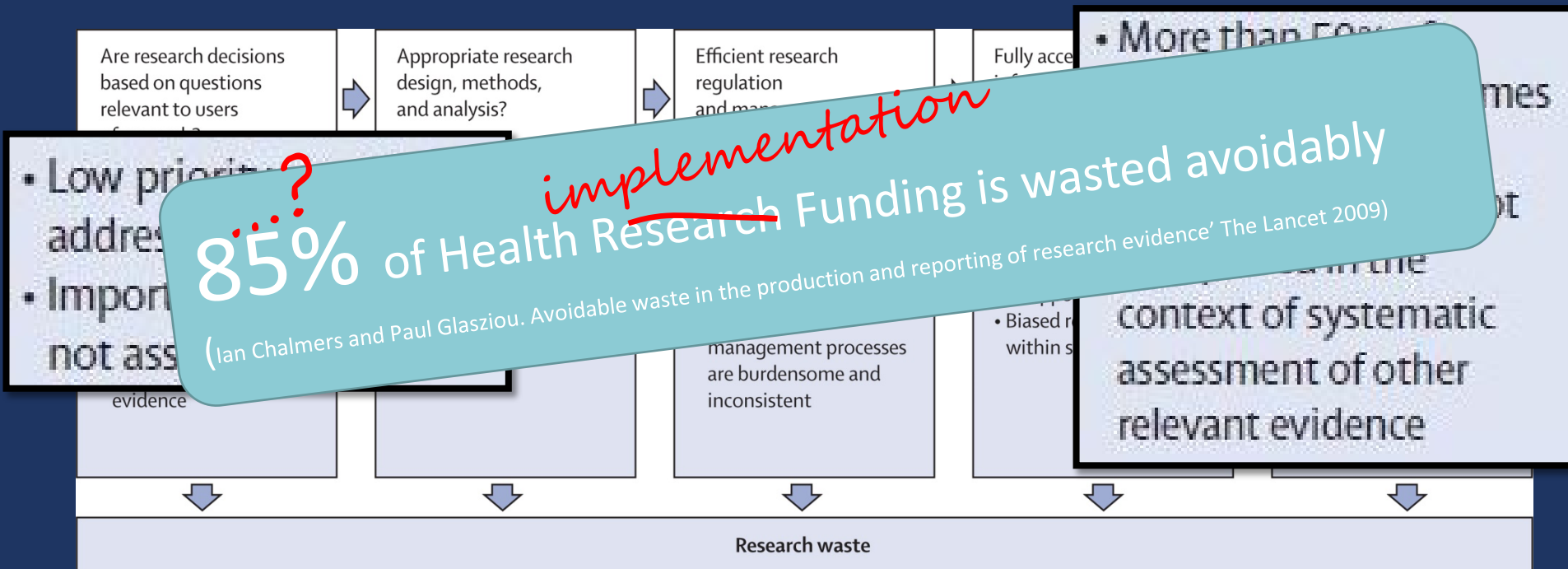
Joint Research Programme



New HSR studies to be funded in ~~partner~~ *all* countries

Requires both MS and European level alignment and commitment

Underlying problem of research waste



Biomedical research: increasing value, reducing waste. Malcolm R Macleod, Susan Michie, Ian Roberts, Ulrich Dirnagl, Iain Chalmers, John P A Ioannidis, Rustam Al-Shahi Salman, An-Wen Chan, Paul Glasziou, The Lancet, 2014

Underlying problem of research waste

EViR Funders' Forum

Home Consensus Statement Guiding Principles Implementation of Guiding Princi... About Membership

Ensuring Value in Research (EViR)

Funders' Collaboration and Development Forum

Organisations from around the world are coming together to advance the practices of health related research and research funding, in order to increase the value of health related research.

The Ensuring Value in Research (EViR) Funders' Collaboration and Development Forum started in 2017, with meetings in London, Den Haag and Washington DC. In our first year the Funders' Forum developed a [Consensus Statement](#) and [Guiding Principles](#).

As organisations that fund health-related research, represent funders, or set funding policy, we have a responsibility not just to seek to advance knowledge, but also to advance the practices of health-related research and research funding. Through working together and with our respective research communities we are sharing current and developing new approaches to increase the value of health-related research.

Delegates from eight countries have attended meetings so far, with the next meeting of the EViR Funders' Forum taking place in Cardiff, Wales, UK on 16-17 May 2018.

Members of the forum who have already endorsed the consensus statement and guiding principles include:

- [Forte \(Sweden\)](#)
- [Health and Care Research Wales - Welsh Government \(UK\)](#)
- [Health Research Board Ireland \(Ireland\)](#)
- [Marie Curie \(UK\)](#)
- [Ministry of Health \(Italy\)](#)
- [NIHR - National Institute for Health Research \(UK\)*](#)
- [PCORI - Patient Centered Outcomes Research Institute \(USA\)*](#)
- [ZonMW - The Netherlands Organisation for Health Research and Development \(Netherlands\)*](#)

The goal of TO-REACH is to prepare a joint **European research programme** aimed at producing **research evidence supporting health care services and systems** to become more resilient, effective, equitable, accessible, sustainable and comprehensive.

- 1. Identify common challenges and organizational needs across Europe**
- 2. Propose possible solutions to improve health system performance**
- 3. Identify the most effective ways to organize, manage, finance, and deliver high quality, sustainable, and equitable care to our citizens.**

TO-REACH: objectives, tasks, outcomes

Main objectives

1. Identify Strategic
Priorities

2. Building Research
Infrastructure

Main tasks

Identify future challenges
and priorities

Provide knowledge synthesis
and analytical framework

Prepare a common and
sustainable platform by
research funding bodies
(**strengthening the network**)

Enhance cooperation and
linkage with other funders
networks
(**embedding the network**)

Outcomes

**Strategic Research
Agenda**

TO-REACH is a Coordination and Support Action, **not a research project**, so it is focused on **setting out clearly** what needs to be done in terms of the **future Health Services and Systems Research agenda.**

The agenda for HSR

WHAT'S THE PROBLEM?

to-reach

*agenda for health services
and systems research*

identifying **new solutions** able to respond to rising challenges

understanding and **predicting** whether such solutions can be **implemented and transferred effectively** in other settings.

WHAT WILL WORK?

The consortium

28 partners - 20 countries

Europe



Israel



US and Canada



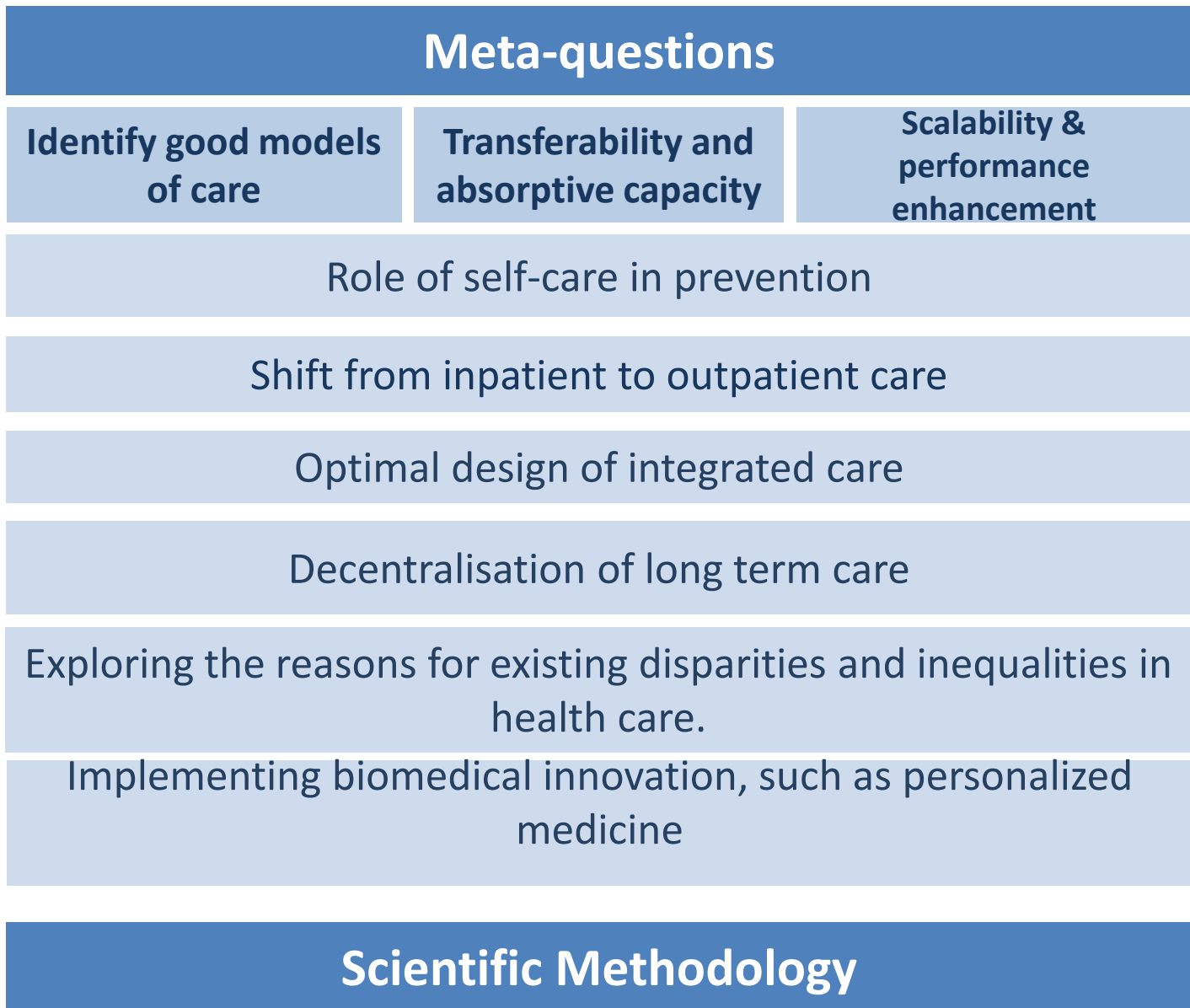
Stakeholder involvement

10th



TO REACH - Conceptual framework

**Substantive
themes
(some...)**



Conceptual framework

Originating system

- Structure of the health system and
- Wider context (political system, cultural values)

Characteristics / working ingredients (e.g. innovation or care)

To be determined by:

- Mapping & scanning of the (grey) literature
- Alignment with sister initiatives
- National consultations in partner countries
- Stakeholder and research consultations at EU level

Receiving system

- Problem to be solved and its urgency)
- Structure of the health system and service delivery
- Wider context (policy & political system, cultural values)

Adapted arrangement / innovation

Organisational and system performance

Feedback to originating system

Similarity between both systems

absorptive capacity)

Identify these problems

Question set 1

1. What examples of excellent innovation are you aware of in Northern Ireland, which could be transferred to other countries?
2. Which are the most important priorities for health systems research within our country? Why? Which challenges will they help to address?

Question set 2

1. What are the research priorities/projects for which we see added value in organising health systems research at European level? Why?
2. Which are the key criteria that need to be satisfied to ensure effective and appropriate transfer of innovation between health systems in different countries?

Some instruction

Points of reference:

- Can we **pinpoint to specific problems** that need solving?
- A **forward looking perspective** to be policy relevant in the next 5-10 years
- Attention to the **context-dependency** of health care provision
- Beyond the boundaries of the health (care) system:
*an eye on (upcoming) challenges in e.g. climate change, migration, employment and welfare **in light of their implications on how health and social care can best be provided in the future***
- How to avoid thinking in currently set structures (with vested interests)?

Contacts

Learn more



www.to-reach.eu

Contact us



to.reach@iss.it

Follow us



[@toreachEU](https://twitter.com/toreachEU)

